

915P-B

Rev: 1.0

Page Title of Schematic :

Schematics Version History Table :

Circuit Ver.	PCB Ver.	Total Page	Modified Page(s)	Date
A	A	34		04/06/'05
B	B	34		21/06/'05
1.0	1.0	34		04/07/'05

Title	Page	Title	Page
Cover Sheet	1		
System Block Diagram	2		
P4 LGA775P Part A	3		
P4 LGA775P Part B	4		
P4 LGA775P Part C	5		
P4 LGA775P Part D	6		
P4 LGA775P Part E	7		
Clock Generator(CK410)	8		
I-GSD(MCH)Part A & E & F	9		
I-GSD(MCH)Part D	10		
I-GSD(MCH)Part B & C	11		
I-GSD(MCH)Part G	12		
DIMM 1&2 (DDR2 SDRAMs)	13		
DIMM 3&4 (DDR2 SDRAMs)	14		
DDR & V_FSB_VTT Power	15		
PCI EXPRESS 16-PORT	16		
ICH6 Part A & D (SATA-CONNECTOR)	17		
ICH6 Part B & C (RTC)	18		
ICH6 Part E & F (POWER & GND)	19		
IDE1 Connector	20		
USB/FWH	21		
LPC_FDD/KB/M	22		
I/O Ports	23		
H/W Monitor	24		
AC97 Codec	25		
Audio Interface	26		
ATX Power & Front Panel	27		
LAN	28		
Vcore DC-DC	29		
MIS DC-DC(DUAL & VDDQ)	30		
PCI Slot 1&2	31		
PCI Express X1	32		
Back I/O	33		
Schematic Change History	34		

DEVICE	IDSEL	INT#	REQ#	GNT#
PCI1	17	C/D/E/F	PREQ-0	PGNT-0
PCI2	18	D/E/F/G	PREQ-1	PGNT-1
PCI3	19	F/E/H/G	PREQ-2	PGNT-2
LAN	21	E	PREQ-4	PGNT-4

**INTEL
P4 Processor
PSC, Tejas -
LGA 775 pin**

ICS954119

Host Bus: 133/200MHz
DMI, PCIEx16, SATA: 100MHz
VGA: 96MHz
USB, SIO: 48MHz
PCI: 33MHz
Timer, Audio: 14.318MHz

BW : 4.1GB/s @ FSB : 533MHz & Freq : 133MHz
BW : 6.4GB/s @ FSB : 800MHz & Freq : 200MHz

SIZE : Min 128MB (ONE 256Mb X 16 Single-Sided DEVICES)
SIZE : Max 4GB (Four 512Mb X 8 Double-Sided DEVICES)
BW : 8.5GB/s @ DDR2 :400/533MHz
BW : 6.4GB/s @ DDR : 333/400MHz

BW : 2.5GB/s @ Freq : 100MHz

**PCIE Slot 164p
X16**

**INTEL
I-GDS/G**

VGA (G only)

1210pin FC-BGA

DIMM1: DDR Socket 240P

DIMM2 : DDR Socket 240P

DIMM3: DDR Socket 240P

DIMM4 : DDR Socket 240P

BW : 2GB/s (Support Lsoch)

Analong Display
RAMDAC: 400MHz
Resolutions Up To 2048x1536@75Hz

**USB1
2 ports**

**USB2
2 ports**

**USB3
2 ports**

**USB4
2 ports**

**USBLAN
8 ports**

USB V2.0

Up to Ultra ATA/100

IDE1 40pin

Two IDE Channel

**INTEL
ICH6**

BW : 133MB/s @Freq : 33MHz

PCI1 Slot 120pin @ AD17

PCI2 Slot 120pin @ AD18

PCI3 Slot 120pin @ AD19

609pin EPGA

**Mic In
Line Out
Line In**

**Audio Codec
ALC655**

AC' 97 & Lan I/F

LPC bus

**intel
FWH
32pin PLCC**

Giga Lan

**USBLAN
RJ45**

SATA1 7Pin

SATA2 7pin

SATA3 7Pin

SATA4 7pin

BW : 150MB/s

**Super I/O
W38627THF
128pin PQFP**

PCB : 244 x 244 mm ; 4 layers



Elitegroup Computer Systems

Title **System Block Diagram**

Size Document Number

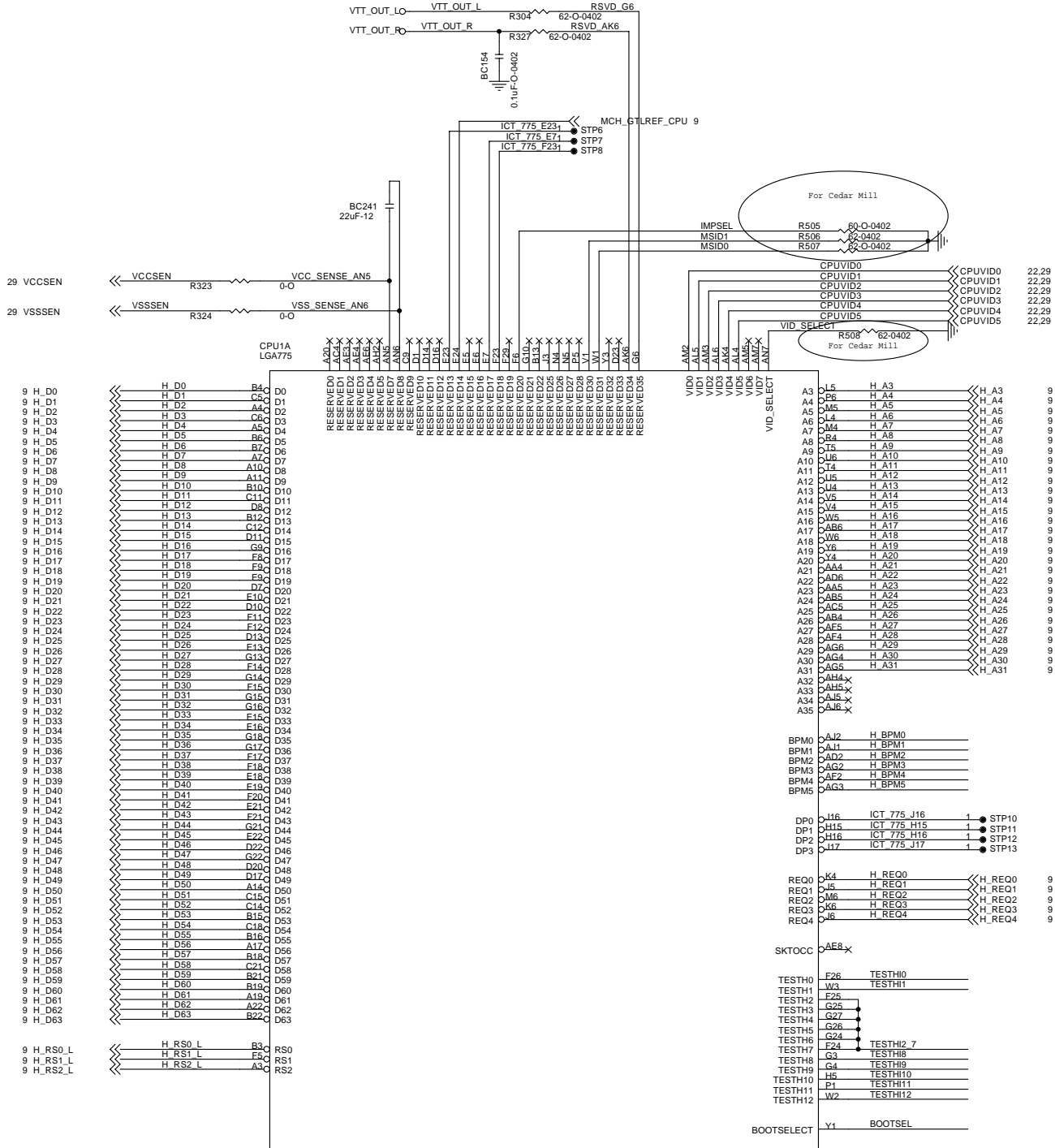
915P-B

Rev

1.0

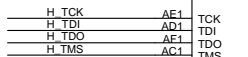
Date: Monday, July 04, 2005

Sheet 2 of 34





LL= LOAD LINE for load line select



BC13

Y



GTLREF GENERATION CIRCUITS

```

CPU SIGNAL    CLOSE TO
TERMINATION   CPU
-----

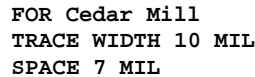
```

BSEL resistors can be removed IF
ONLY TEJAS AND CEDAR MILL ARE
SUPPORTED

PLACE TDO TERMINATION NEAR CONNECTOR

PLACE TCK/TDI/TMS TERMINATION NEAR CPU
WITHIN 1.5" OF CPU, IDEALLY NEXT TO IT.

PLACE TRST_L TERMINATION ANYWHERE ON ROUTE

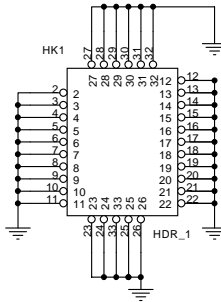
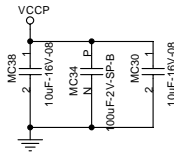
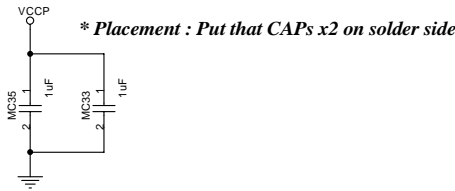
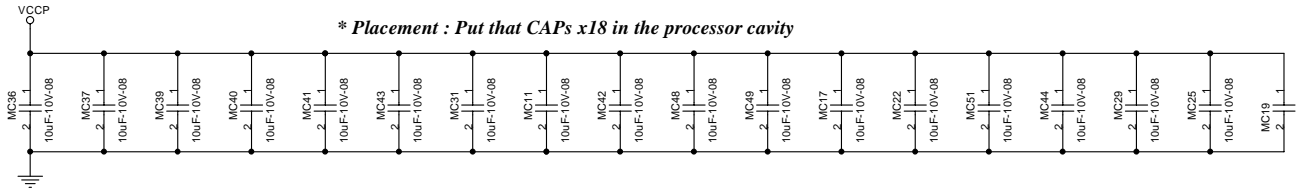


1994	99
------	----

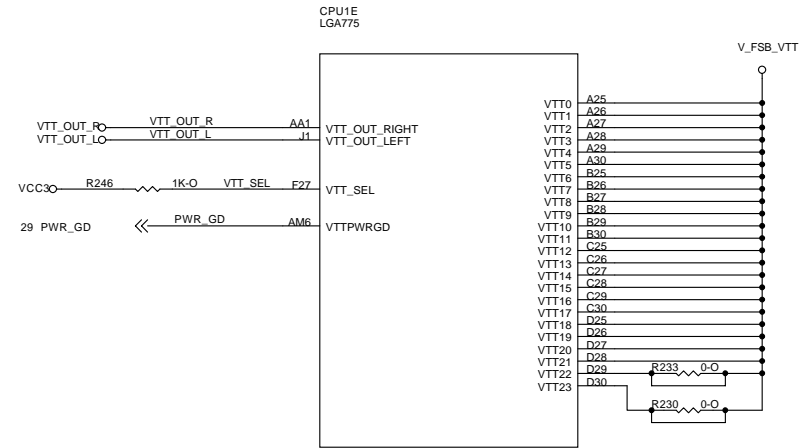
GTLREF GENERATION CIRCUITS

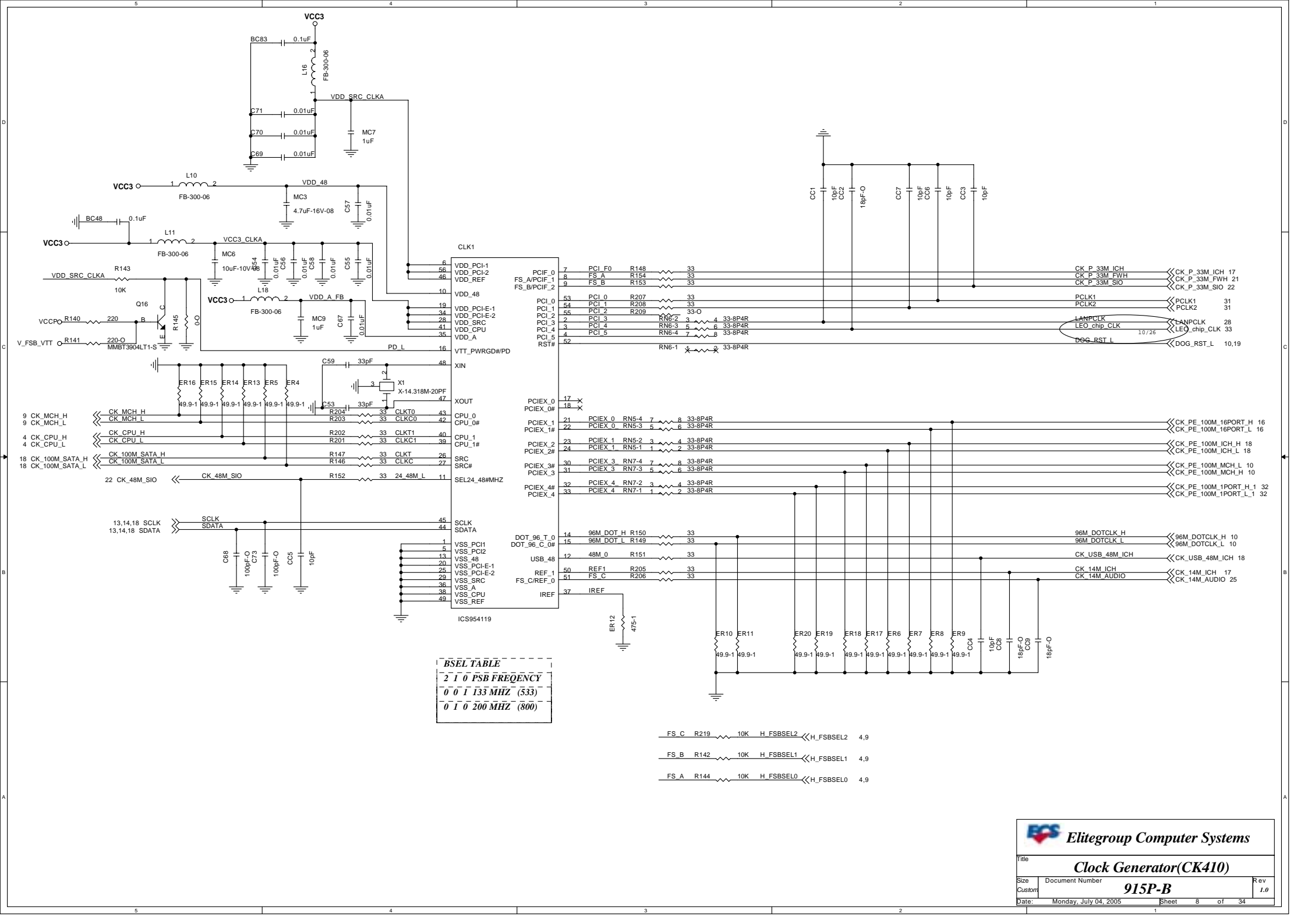
For Cedar Mill





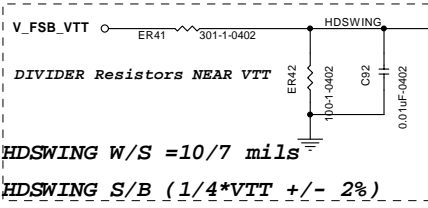
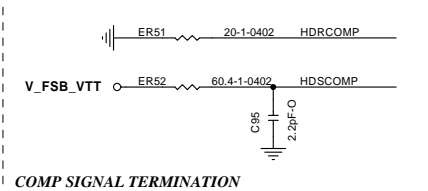
VTT_SEL=0 for the Tejas processor



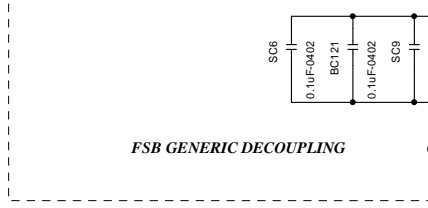
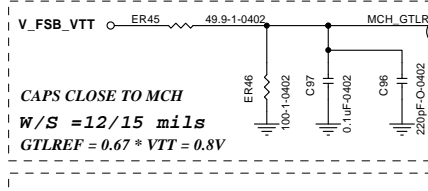
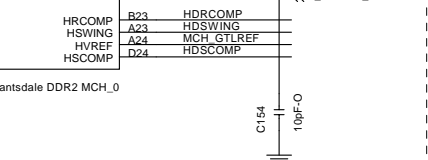


3 H_D0	H_D0	J33	HD0#
3 H_D1	H_D1	J34	HD1#
3 H_D2	H_D2	J35	HD2#
3 H_D3	H_D3	J36	HD3#
3 H_D4	H_D4	J37	HD4#
3 H_D5	H_D5	J38	HD5#
3 H_D6	H_D6	J39	HD6#
3 H_D7	H_D7	J40	HD7#
3 H_D8	H_D8	J41	HD8#
3 H_D9	H_D9	J42	HD9#
3 H_D10	H_D10	J43	HD10#
3 H_D11	H_D11	J44	HD11#
3 H_D12	H_D12	J45	HD12#
3 H_D13	H_D13	J46	HD13#
3 H_D14	H_D14	J47	HD14#
3 H_D15	H_D15	J48	HD15#
3 H_D16	H_D16	J49	HD16#
3 H_D17	H_D17	J50	HD17#
3 H_D18	H_D18	J51	HD18#
3 H_D19	H_D19	J52	HD19#
3 H_D20	H_D20	J53	HD20#
3 H_D21	H_D21	J54	HD21#
3 H_D22	H_D22	J55	HD22#
3 H_D23	H_D23	J56	HD23#
3 H_D24	H_D24	J57	HD24#
3 H_D25	H_D25	J58	HD25#
3 H_D26	H_D26	J59	HD26#
3 H_D27	H_D27	J60	HD27#
3 H_D28	H_D28	J61	HD28#
3 H_D29	H_D29	J62	HD29#
3 H_D30	H_D30	J63	HD30#
3 H_D31	H_D31	J64	HD31#
3 H_D32	H_D32	J65	HD32#
3 H_D33	H_D33	J66	HD33#
3 H_D34	H_D34	J67	HD34#
3 H_D35	H_D35	J68	HD35#
3 H_D36	H_D36	J69	HD36#
3 H_D37	H_D37	J70	HD37#
3 H_D38	H_D38	J71	HD38#
3 H_D39	H_D39	J72	HD39#
3 H_D40	H_D40	J73	HD40#
3 H_D41	H_D41	J74	HD41#
3 H_D42	H_D42	J75	HD42#
3 H_D43	H_D43	J76	HD43#
3 H_D44	H_D44	J77	HD44#
3 H_D45	H_D45	J78	HD45#
3 H_D46	H_D46	J79	HD46#
3 H_D47	H_D47	J80	HD47#
3 H_D48	H_D48	J81	HD48#
3 H_D49	H_D49	J82	HD49#
3 H_D50	H_D50	J83	HD50#
3 H_D51	H_D51	J84	HD51#
3 H_D52	H_D52	J85	HD52#
3 H_D53	H_D53	J86	HD53#
3 H_D54	H_D54	J87	HD54#
3 H_D55	H_D55	J88	HD55#
3 H_D56	H_D56	J89	HD56#
3 H_D57	H_D57	J90	HD57#
3 H_D58	H_D58	J91	HD58#
3 H_D59	H_D59	J92	HD59#
3 H_D60	H_D60	J93	HD60#
3 H_D61	H_D61	J94	HD61#
3 H_D62	H_D62	J95	HD62#
3 H_D63	H_D63	J96	HD63#

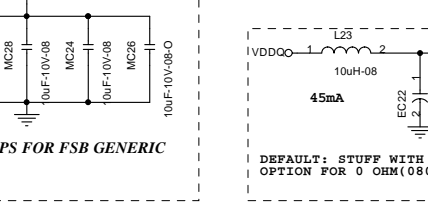
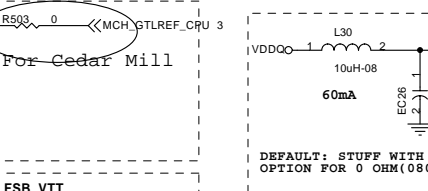
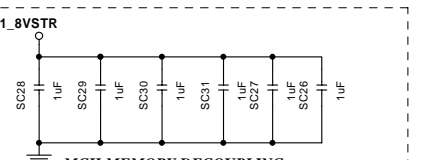
4.8 H_FSBSEL0	H_FSBSEL0	ER47	10K	BSEL0	H16
4.8 H_FSBSEL1	H_FSBSEL1	ER44	10K	BSEL1	E15
4.8 H_FSBSEL2	H_FSBSEL2	ER48	10K	BSEL2	D17



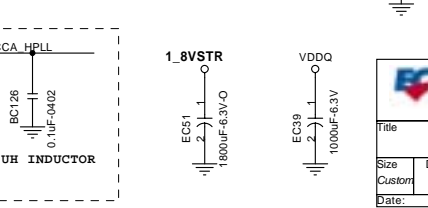
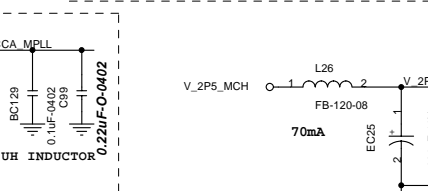
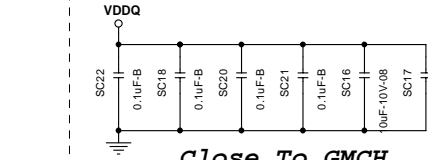
HA3#	H29	H A3	H A3
HA4#	H29	H A4	H A4
HA5#	H29	H A5	H A5
HA6#	H30	H A6	H A6
HA7#	H32	H A7	H A7
HA8#	H30	H A8	H A8
HA9#	H30	H A9	H A9
HA10#	H31	H A10	H A10
HA11#	H31	H A11	H A11
HA12#	H32	H A12	H A12
HA13#	H32	H A13	H A13
HA14#	H33	H A14	H A14
HA15#	H33	H A15	H A15
HA16#	H34	H A16	H A16
HA17#	H34	H A17	H A17
HA18#	H35	H A18	H A18
HA19#	H35	H A19	H A19
HA20#	H36	H A20	H A20
HA21#	H36	H A21	H A21
HA22#	H37	H A22	H A22
HA23#	H37	H A23	H A23
HA24#	H38	H A24	H A24
HA25#	H38	H A25	H A25
HA26#	H39	H A26	H A26
HA27#	H39	H A27	H A27
HA28#	H40	H A28	H A28
HA29#	H40	H A29	H A29
HA30#	H41	H A30	H A30
HA31#	H41	H A31	H A31



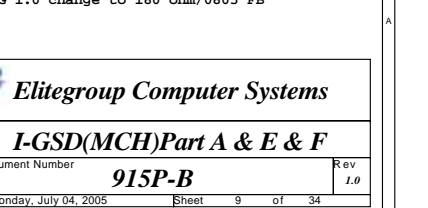
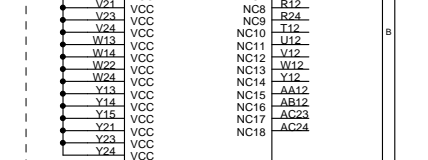
HREQ0#	E33	H REQ0	H REQ0
HREQ1#	E32	H REQ1	H REQ1
HREQ2#	E31	H REQ2	H REQ2
HREQ3#	E30	H REQ3	H REQ3
HREQ4#	E29	H REQ4	H REQ4
HREQ5#	E28	H REQ5	H REQ5
HREQ6#	E27	H REQ6	H REQ6
HREQ7#	E26	H REQ7	H REQ7
HREQ8#	E25	H REQ8	H REQ8
HREQ9#	E24	H REQ9	H REQ9
HREQ10#	E23	H REQ10	H REQ10
HREQ11#	E22	H REQ11	H REQ11
HREQ12#	E21	H REQ12	H REQ12
HREQ13#	E20	H REQ13	H REQ13
HREQ14#	E19	H REQ14	H REQ14
HREQ15#	E18	H REQ15	H REQ15
HREQ16#	E17	H REQ16	H REQ16
HREQ17#	E16	H REQ17	H REQ17
HREQ18#	E15	H REQ18	H REQ18
HREQ19#	E14	H REQ19	H REQ19
HREQ20#	E13	H REQ20	H REQ20
HREQ21#	E12	H REQ21	H REQ21
HREQ22#	E11	H REQ22	H REQ22
HREQ23#	E10	H REQ23	H REQ23
HREQ24#	E09	H REQ24	H REQ24
HREQ25#	E08	H REQ25	H REQ25
HREQ26#	E07	H REQ26	H REQ26
HREQ27#	E06	H REQ27	H REQ27
HREQ28#	E05	H REQ28	H REQ28
HREQ29#	E04	H REQ29	H REQ29
HREQ30#	E03	H REQ30	H REQ30
HREQ31#	E02	H REQ31	H REQ31
HREQ32#	E01	H REQ32	H REQ32
HREQ33#	E00	H REQ33	H REQ33



V_FSB_VTT	H22	VTT	VTT
V_FSB_VTT	G22	VTT	VTT
V_FSB_VTT	F22	VTT	VTT
V_FSB_VTT	F21	VTT	VTT
V_FSB_VTT	F20	VTT	VTT
V_FSB_VTT	F22	VTT	VTT
V_FSB_VTT	E21	VTT	VTT
V_FSB_VTT	E20	VTT	VTT
V_FSB_VTT	E19	VTT	VTT
V_FSB_VTT	D22	VTT	VTT
V_FSB_VTT	D21	VTT	VTT
V_FSB_VTT	D19	VTT	VTT
V_FSB_VTT	C22	VTT	VTT
V_FSB_VTT	C21	VTT	VTT
V_FSB_VTT	C20	VTT	VTT
V_FSB_VTT	C19	VTT	VTT
V_FSB_VTT	B22	VTT	VTT
V_FSB_VTT	B21	VTT	VTT
V_FSB_VTT	B20	VTT	VTT
V_FSB_VTT	B19	VTT	VTT
V_FSB_VTT	A22	VTT	VTT
V_FSB_VTT	A21	VTT	VTT
V_FSB_VTT	A20	VTT	VTT
V_FSB_VTT	A19	VTT	VTT



V_FSB_VTT	H22	VTT	VTT
V_FSB_VTT	G22	VTT	VTT
V_FSB_VTT	F22	VTT	VTT
V_FSB_VTT	F21	VTT	VTT
V_FSB_VTT	F20	VTT	VTT
V_FSB_VTT	F22	VTT	VTT
V_FSB_VTT	E21	VTT	VTT
V_FSB_VTT	E20	VTT	VTT
V_FSB_VTT	E19	VTT	VTT
V_FSB_VTT	D22	VTT	VTT
V_FSB_VTT	D21	VTT	VTT
V_FSB_VTT	D19	VTT	VTT
V_FSB_VTT	C22	VTT	VTT
V_FSB_VTT	C21	VTT	VTT
V_FSB_VTT	C20	VTT	VTT
V_FSB_VTT	C19	VTT	VTT
V_FSB_VTT	B22	VTT	VTT
V_FSB_VTT	B21	VTT	VTT
V_FSB_VTT	B20	VTT	VTT
V_FSB_VTT	B19	VTT	VTT
V_FSB_VTT	A22	VTT	VTT
V_FSB_VTT	A21	VTT	VTT
V_FSB_VTT	A20	VTT	VTT
V_FSB_VTT	A19	VTT	VTT



Elitegroup Computer Systems

Title: **I-GSD(MCH)Part A & E & F**

Size: Custom Document Number **915P-B** Rev 1.0

Date: Monday, July 04, 2005 Sheet 9 of 34

Grantsdale DDR2 MCH_0

G2 VSS
G4 VSS
G5 VSS
G6 VSS
G8 VSS
G9 VSS
G10 VSS
G11 VSS
G12 VSS
G13 VSS
G14 VSS
G15 VSS
G16 VSS
G17 VSS
G18 VSS
G19 VSS
G20 VSS
G21 VSS
G22 VSS
G23 VSS
G24 VSS
G25 VSS
G26 VSS
G27 VSS
G28 VSS
G29 VSS
G30 VSS
G31 VSS
G32 VSS
G33 VSS
G34 VSS
G35 VSS
G36 VSS
G37 VSS
G38 VSS
G39 VSS
G40 VSS
G41 VSS
G42 VSS
G43 VSS
G44 VSS
G45 VSS
G46 VSS
G47 VSS
G48 VSS
G49 VSS
G50 VSS
G51 VSS
G52 VSS
G53 VSS
G54 VSS
G55 VSS
G56 VSS
G57 VSS
G58 VSS
G59 VSS
G60 VSS
G61 VSS
G62 VSS
G63 VSS
G64 VSS
G65 VSS
G66 VSS
G67 VSS
G68 VSS
G69 VSS
G70 VSS
G71 VSS
G72 VSS
G73 VSS
G74 VSS
G75 VSS
G76 VSS
G77 VSS
G78 VSS
G79 VSS
G80 VSS
G81 VSS
G82 VSS
G83 VSS
G84 VSS
G85 VSS
G86 VSS
G87 VSS
G88 VSS
G89 VSS
G90 VSS
G91 VSS
G92 VSS
G93 VSS
G94 VSS
G95 VSS
G96 VSS
G97 VSS
G98 VSS
G99 VSS
G100 VSS
G101 VSS
G102 VSS
G103 VSS
G104 VSS
G105 VSS
G106 VSS
G107 VSS
G108 VSS
G109 VSS
G110 VSS
G111 VSS
G112 VSS
G113 VSS
G114 VSS
G115 VSS
G116 VSS
G117 VSS
G118 VSS
G119 VSS
G120 VSS
G121 VSS
G122 VSS
G123 VSS
G124 VSS
G125 VSS
G126 VSS
G127 VSS
G128 VSS
G129 VSS
G130 VSS
G131 VSS
G132 VSS
G133 VSS
G134 VSS
G135 VSS
G136 VSS
G137 VSS
G138 VSS
G139 VSS
G140 VSS
G141 VSS
G142 VSS
G143 VSS
G144 VSS
G145 VSS
G146 VSS
G147 VSS
G148 VSS
G149 VSS
G150 VSS
G151 VSS
G152 VSS
G153 VSS
G154 VSS
G155 VSS
G156 VSS
G157 VSS
G158 VSS
G159 VSS
G160 VSS
G161 VSS
G162 VSS
G163 VSS
G164 VSS
G165 VSS
G166 VSS
G167 VSS
G168 VSS
G169 VSS
G170 VSS
G171 VSS
G172 VSS
G173 VSS
G174 VSS
G175 VSS
G176 VSS
G177 VSS
G178 VSS
G179 VSS
G180 VSS
G181 VSS
G182 VSS
G183 VSS
G184 VSS
G185 VSS
G186 VSS
G187 VSS
G188 VSS
G189 VSS
G190 VSS
G191 VSS
G192 VSS
G193 VSS
G194 VSS
G195 VSS
G196 VSS
G197 VSS
G198 VSS
G199 VSS
G200 VSS
G201 VSS
G202 VSS
G203 VSS
G204 VSS
G205 VSS
G206 VSS
G207 VSS
G208 VSS
G209 VSS
G210 VSS
G211 VSS
G212 VSS
G213 VSS
G214 VSS
G215 VSS
G216 VSS
G217 VSS
G218 VSS
G219 VSS
G220 VSS
G221 VSS
G222 VSS
G223 VSS
G224 VSS
G225 VSS
G226 VSS
G227 VSS
G228 VSS
G229 VSS
G230 VSS
G231 VSS
G232 VSS
G233 VSS
G234 VSS
G235 VSS
G236 VSS
G237 VSS
G238 VSS
G239 VSS
G240 VSS
G241 VSS
G242 VSS
G243 VSS
G244 VSS
G245 VSS
G246 VSS
G247 VSS
G248 VSS
G249 VSS
G250 VSS
G251 VSS
G252 VSS
G253 VSS
G254 VSS
G255 VSS
G256 VSS
G257 VSS
G258 VSS
G259 VSS
G260 VSS
G261 VSS
G262 VSS
G263 VSS
G264 VSS
G265 VSS
G266 VSS
G267 VSS
G268 VSS
G269 VSS
G270 VSS
G271 VSS
G272 VSS
G273 VSS
G274 VSS
G275 VSS
G276 VSS
G277 VSS
G278 VSS
G279 VSS
G280 VSS
G281 VSS
G282 VSS
G283 VSS
G284 VSS
G285 VSS
G286 VSS
G287 VSS
G288 VSS
G289 VSS
G290 VSS
G291 VSS
G292 VSS
G293 VSS
G294 VSS
G295 VSS
G296 VSS
G297 VSS
G298 VSS
G299 VSS
G300 VSS
G301 VSS
G302 VSS
G303 VSS
G304 VSS
G305 VSS
G306 VSS
G307 VSS
G308 VSS
G309 VSS
G310 VSS
G311 VSS
G312 VSS
G313 VSS
G314 VSS
G315 VSS
G316 VSS
G317 VSS
G318 VSS
G319 VSS
G320 VSS
G321 VSS
G322 VSS
G323 VSS
G324 VSS
G325 VSS
G326 VSS
G327 VSS
G328 VSS
G329 VSS
G330 VSS
G331 VSS
G332 VSS
G333 VSS
G334 VSS
G335 VSS
G336 VSS
G337 VSS
G338 VSS
G339 VSS
G340 VSS
G341 VSS
G342 VSS
G343 VSS
G344 VSS
G345 VSS
G346 VSS
G347 VSS
G348 VSS
G349 VSS
G350 VSS
G351 VSS
G352 VSS
G353 VSS
G354 VSS
G355 VSS
G356 VSS
G357 VSS
G358 VSS
G359 VSS
G360 VSS
G361 VSS
G362 VSS
G363 VSS
G364 VSS
G365 VSS
G366 VSS
G367 VSS
G368 VSS
G369 VSS
G370 VSS
G371 VSS
G372 VSS
G373 VSS
G374 VSS
G375 VSS
G376 VSS
G377 VSS
G378 VSS
G379 VSS
G380 VSS
G381 VSS
G382 VSS
G383 VSS
G384 VSS
G385 VSS
G386 VSS
G387 VSS
G388 VSS
G389 VSS
G390 VSS
G391 VSS
G392 VSS
G393 VSS
G394 VSS
G395 VSS
G396 VSS
G397 VSS
G398 VSS
G399 VSS
G400 VSS
G401 VSS
G402 VSS
G403 VSS
G404 VSS
G405 VSS
G406 VSS
G407 VSS
G408 VSS
G409 VSS
G410 VSS
G411 VSS
G412 VSS
G413 VSS
G414 VSS
G415 VSS
G416 VSS
G417 VSS
G418 VSS
G419 VSS
G420 VSS
G421 VSS
G422 VSS
G423 VSS
G424 VSS
G425 VSS
G426 VSS
G427 VSS
G428 VSS
G429 VSS
G430 VSS
G431 VSS
G432 VSS
G433 VSS
G434 VSS
G435 VSS
G436 VSS
G437 VSS
G438 VSS
G439 VSS
G440 VSS
G441 VSS
G442 VSS
G443 VSS
G444 VSS
G445 VSS
G446 VSS
G447 VSS
G448 VSS
G449 VSS
G450 VSS
G451 VSS
G452 VSS
G453 VSS
G454 VSS
G455 VSS
G456 VSS
G457 VSS
G458 VSS
G459 VSS
G460 VSS
G461 VSS
G462 VSS
G463 VSS
G464 VSS
G465 VSS
G466 VSS
G467 VSS
G468 VSS
G469 VSS
G470 VSS
G471 VSS
G472 VSS
G473 VSS
G474 VSS
G475 VSS
G476 VSS
G477 VSS
G478 VSS
G479 VSS
G480 VSS
G481 VSS
G482 VSS
G483 VSS
G484 VSS
G485 VSS
G486 VSS
G487 VSS
G488 VSS
G489 VSS
G490 VSS
G491 VSS
G492 VSS
G493 VSS
G494 VSS
G495 VSS
G496 VSS
G497 VSS
G498 VSS
G499 VSS
G500 VSS
G501 VSS
G502 VSS
G503 VSS
G504 VSS
G505 VSS
G506 VSS
G507 VSS
G508 VSS
G509 VSS
G510 VSS
G511 VSS
G512 VSS
G513 VSS
G514 VSS
G515 VSS
G516 VSS
G517 VSS
G518 VSS
G519 VSS
G520 VSS
G521 VSS
G522 VSS
G523 VSS
G524 VSS
G525 VSS
G526 VSS
G527 VSS
G528 VSS
G529 VSS
G530 VSS
G531 VSS
G532 VSS
G533 VSS
G534 VSS
G535 VSS
G536 VSS
G537 VSS
G538 VSS
G539 VSS
G540 VSS
G541 VSS
G542 VSS
G543 VSS
G544 VSS
G545 VSS
G546 VSS
G547 VSS
G548 VSS
G549 VSS
G550 VSS
G551 VSS
G552 VSS
G553 VSS
G554 VSS
G555 VSS
G556 VSS
G557 VSS
G558 VSS
G559 VSS
G560 VSS
G561 VSS
G562 VSS
G563 VSS
G564 VSS
G565 VSS
G566 VSS
G567 VSS
G568 VSS
G569 VSS
G570 VSS
G571 VSS
G572 VSS
G573 VSS
G574 VSS
G575 VSS
G576 VSS
G577 VSS
G578 VSS
G579 VSS
G580 VSS
G581 VSS
G582 VSS
G583 VSS
G584 VSS
G585 VSS
G586 VSS
G587 VSS
G588 VSS
G589 VSS
G590 VSS
G591 VSS
G592 VSS
G593 VSS
G594 VSS
G595 VSS
G596 VSS
G597 VSS
G598 VSS
G599 VSS
G600 VSS
G601 VSS
G602 VSS
G603 VSS
G604 VSS
G605 VSS
G606 VSS
G607 VSS
G608 VSS
G609 VSS
G610 VSS
G611 VSS
G612 VSS
G613 VSS
G614 VSS
G615 VSS
G616 VSS
G617 VSS
G618 VSS
G619 VSS
G620 VSS
G621 VSS
G622 VSS
G623 VSS
G624 VSS
G625 VSS
G626 VSS
G627 VSS
G628 VSS
G629 VSS
G630 VSS
G631 VSS
G632 VSS
G633 VSS
G634 VSS
G635 VSS
G636 VSS
G637 VSS
G638 VSS
G639 VSS
G640 VSS
G641 VSS
G642 VSS
G643 VSS
G644 VSS
G645 VSS
G646 VSS
G647 VSS
G648 VSS
G649 VSS
G650 VSS
G651 VSS
G652 VSS
G653 VSS
G654 VSS
G655 VSS
G656 VSS
G657 VSS
G658 VSS
G659 VSS
G660 VSS
G661 VSS
G662 VSS
G663 VSS
G664 VSS
G665 VSS
G666 VSS
G667 VSS
G668 VSS
G669 VSS
G670 VSS
G671 VSS
G672 VSS
G673 VSS
G674 VSS
G675 VSS
G676 VSS
G677 VSS
G678 VSS
G679 VSS
G680 VSS
G681 VSS
G682 VSS
G683 VSS
G684 VSS
G685 VSS
G686 VSS
G687 VSS
G688 VSS
G689 VSS
G690 VSS
G691 VSS
G692 VSS
G693 VSS
G694 VSS
G695 VSS
G696 VSS
G697 VSS
G698 VSS
G699 VSS
G700 VSS
G701 VSS
G702 VSS
G703 VSS
G704 VSS
G705 VSS
G706 VSS
G707 VSS
G708 VSS
G709 VSS
G710 VSS
G711 VSS
G712 VSS
G713 VSS
G714 VSS
G715 VSS
G716 VSS
G717 VSS
G718 VSS
G719 VSS
G720 VSS
G721 VSS
G722 VSS
G723 VSS
G724 VSS
G725 VSS
G726 VSS
G727 VSS
G728 VSS
G729 VSS
G730 VSS
G731 VSS
G732 VSS
G733 VSS
G734 VSS
G735 VSS
G736 VSS
G737 VSS
G738 VSS
G739 VSS
G740 VSS
G741 VSS
G742 VSS
G743 VSS
G744 VSS
G745 VSS
G746 VSS
G747 VSS
G748 VSS
G749 VSS
G750 VSS
G751 VSS
G752 VSS
G753 VSS
G754 VSS
G755 VSS
G756 VSS
G757 VSS
G758 VSS
G759 VSS
G760 VSS
G761 VSS
G762 VSS
G763 VSS
G764 VSS
G765 VSS
G766 VSS
G767 VSS
G768 VSS
G769 VSS
G770 VSS
G771 VSS
G772 VSS
G773 VSS
G774 VSS
G775 VSS
G776 VSS
G777 VSS
G778 VSS
G779 VSS
G780 VSS
G781 VSS
G782 VSS
G783 VSS
G784 VSS
G785 VSS
G786 VSS
G787 VSS
G788 VSS
G789 VSS
G790 VSS
G791 VSS
G792 VSS
G793 VSS
G794 VSS
G795 VSS
G796 VSS
G797 VSS
G798 VSS
G799 VSS
G800 VSS
G801 VSS
G802 VSS
G803 VSS
G804 VSS
G805 VSS
G806 VSS
G807 VSS
G808 VSS
G809 VSS
G810 VSS
G811 VSS
G812 VSS
G813 VSS
G814 VSS
G815 VSS
G816 VSS
G817 VSS
G818 VSS
G819 VSS
G820 VSS
G821 VSS
G822 VSS
G823 VSS
G824 VSS
G825 VSS
G826 VSS
G827 VSS
G828 VSS
G829 VSS
G830 VSS
G831 VSS
G832 VSS
G833 VSS
G834 VSS
G835 VSS
G836 VSS
G837 VSS
G838 VSS
G839 VSS
G840 VSS
G841 VSS
G842 VSS
G843 VSS
G844 VSS
G845 VSS
G846 VSS
G847 VSS
G848 VSS
G849 VSS
G850 VSS
G851 VSS
G852 VSS
G853 VSS
G854 VSS
G855 VSS
G856 VSS
G857 VSS
G858 VSS
G859 VSS
G860 VSS
G861 VSS
G862 VSS
G863 VSS
G864 VSS
G865 VSS
G866 VSS
G867 VSS
G868 VSS
G869 VSS
G870 VSS
G871 VSS
G872 VSS
G873 VSS
G874 VSS
G875 VSS
G876 VSS
G877 VSS
G878 VSS
G879 VSS
G880 VSS
G881 VSS
G882 VSS
G883 VSS
G884 VSS
G885 VSS
G886 VSS
G887 VSS
G888 VSS
G889 VSS
G890 VSS
G891 VSS
G892 VSS
G893 VSS
G894 VSS
G895 VSS
G896 VSS
G897 VSS
G898 VSS
G899 VSS
G900 VSS
G901 VSS
G902 VSS
G903 VSS
G904 VSS
G905 VSS
G906 VSS
G907 VSS
G908 VSS
G909 VSS
G910 VSS
G911 VSS
G912 VSS
G913 VSS
G914 VSS
G915 VSS
G916 VSS
G917 VSS
G918 VSS
G919 VSS
G920 VSS
G921 VSS
G922 VSS
G923 VSS
G924 VSS
G925 VSS
G926 VSS
G927 VSS
G928 VSS
G929 VSS
G930 VSS
G931 VSS
G932 VSS
G933 VSS
G934 VSS
G935 VSS
G936 VSS
G937 VSS
G938 VSS
G939 VSS
G940 VSS
G941 VSS
G942 VSS
G943 VSS
G944 VSS
G945 VSS
G946 VSS
G947 VSS
G948 VSS
G949 VSS
G950 VSS
G951 VSS
G952 VSS
G953 VSS
G954 VSS
G955 VSS
G956 VSS
G957 VSS
G958 VSS
G959 VSS
G960 VSS
G961 VSS
G962 VSS
G963 VSS
G964 VSS
G965 VSS
G966 VSS
G967 VSS
G968 VSS
G969 VSS
G970 VSS
G971 VSS
G972 VSS
G973 VSS
G974 VSS
G975 VSS
G976 VSS
G977 VSS
G978 VSS
G979 VSS
G980 VSS
G981 VSS
G982 VSS
G983 VSS
G984 VSS
G985 VSS
G986 VSS
G987 VSS
G988 VSS
G989 VSS
G990 VSS
G991 VSS
G992 VSS
G993 VSS
G994 VSS
G995 VSS
G996 VSS
G997 VSS
G998 VSS
G999 VSS
G1000 VSS

GMCHG

AK21 RSV21
AK22 RSV22
AK23 RSV23
AK24 RSV24
AL20 RSV25
AK18 RSV26
AJ24 RSV27
AJ23 RSV28
AJ18 RSV29
AJ20 RSV30
RSV31
RSV32
RSV33
RSV34
RSV35
RSV36
RSV37
RSV38
RSV39
RSV40

RSV




AR30 VSS
AR29 VSS
AR17 VSS
AR13 VSS
AR8 VSS
AR6 VSS
AN1 VSS
AM1 VSS
AM2 VSS
AM6 VSS
AM7 VSS
AM8 VSS
AMR VSS
AL31 VSS
AL22 VSS
AL19 VSS
AL16 VSS
AL11 VSS
AK30 VSS
AK28 VSS
AK25 VSS
AK23 VSS
AK20 VSS
AK17 VSS
AK14 VSS
AK11 VSS
AK8 VSS
AK7 VSS
AK6 VSS
AK4 VSS
AK1 VSS
A35 VSS
A30 VSS
A27 VSS
A22 VSS
A14 VSS
A13 VSS
A15 VSS
A11 VSS
A10 VSS
A8 VSS
A4 VSS
AH34 VSS
AH33 VSS
AH26 VSS
AH23 VSS
AH20 VSS
AH14 VSS
AH11 VSS
AH8 VSS
AH6 VSS
AH5 VSS
AH1 VSS
AG29 VSS
AG24 VSS
AG23 VSS
AG22 VSS
AG21 VSS
AG18 VSS
AG16 VSS
AG15 VSS
AG12 VSS
AG11 VSS
AG5 VSS
AE35 VSS
AE32 VSS
AE30 VSS
AE29 VSS
AE26 VSS
AE18 VSS
AE16 VSS
AE15 VSS
AE12 VSS
AE10 VSS
AE8 VSS
AE4 VSS
AE12 VSS
AE9 VSS
AE6 VSS
AE4 VSS
AD34 VSS
AD27 VSS
AD26 VSS
AD22 VSS
AD19 VSS
AD16 VSS
AD13 VSS
AD11 VSS
AC32 VSS
AC31 VSS
AC29 VSS
AC27 VSS
AB35 VSS
AB32 VSS
AB30 VSS
AB28 VSS
AA27 VSS
AA26 VSS
AA10 VSS
AA9 VSS
AA8 VSS
AA7 VSS
AA6 VSS
AA5 VSS
AA4 VSS
AA3 VSS
AA2 VSS
Y34 VSS
Y32 VSS
Y31 VSS
Y29 VSS
Y27 VSS
W32 VSS
W30 VSS
W28 VSS
W19 VSS
W17 VSS
V35 VSS
V27 VSS
V26 VSS
V18 VSS
V9 VSS
V6 VSS
V4 VSS
V2 VSS
V1 VSS
U32 VSS
U31 VSS
U29 VSS
U27 VSS
U19 VSS
U17 VSS
U8 VSS
U7 VSS
U4 VSS
U2 VSS
T34 VSS
T32 VSS
T30 VSS
T28 VSS
T10 VSS
T7 VSS
T6 VSS
T5 VSS
T4 VSS
T2 VSS

GND

REV=1.0

VSS AE30
VSS AE28
VSS AE24
VSS AE23
VSS AE21
VSS AE20
VSS AE18
VSS AE17
VSS AE15
VSS AE14
VSS AE12
VSS AE9
VSS AE6
VSS AE4
VSS AD34
VSS AD27
VSS AD26
VSS AD22
VSS AD19
VSS AD16
VSS AD13
VSS AD11
VSS AC32
VSS AC31
VSS AC29
VSS AC27
VSS AB35
VSS AB32
VSS AB30
VSS AB28
VSS AA27
VSS AA26
VSS AA10
VSS AA9
VSS AA8
VSS AA7
VSS AA6
VSS AA5
VSS AA4
VSS AA3
VSS AA2
VSS Y34
VSS Y32
VSS Y31
VSS Y29
VSS Y27
VSS W32
VSS W30
VSS W28
VSS W19
VSS W17
VSS V35
VSS V27
VSS V26
VSS V18
VSS V9
VSS V6
VSS V4
VSS V2
VSS V1
VSS U32
VSS U31
VSS U29
VSS U27
VSS U19
VSS U17
VSS U8
VSS U7
VSS U4
VSS U2
VSS T34
VSS T32
VSS T30
VSS T28
VSS T10
VSS T7
VSS T6
VSS T5
VSS T4
VSS T2

**Elitegroup Computer Systems**

Title

Schematic Change History

Size
Custom

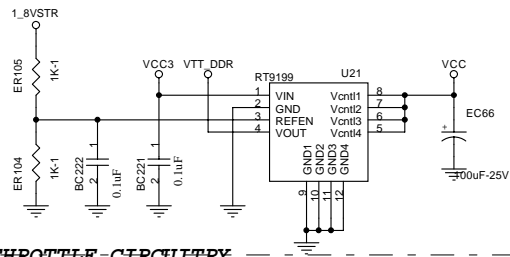
Document Number
915P-B

Rev
1.0

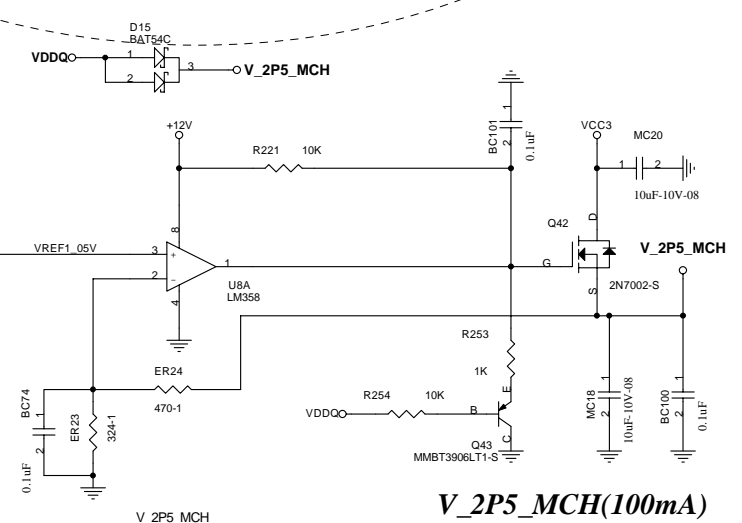
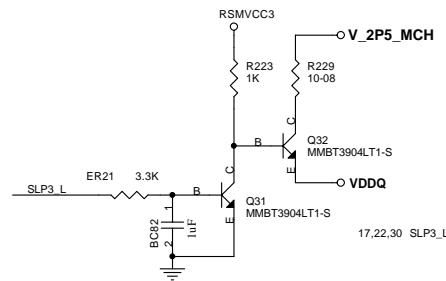
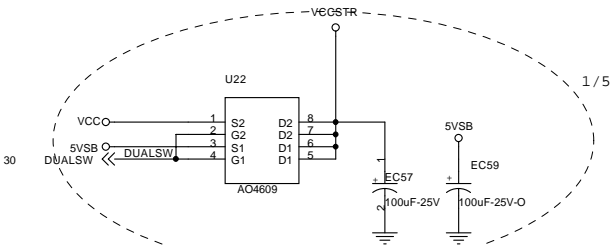
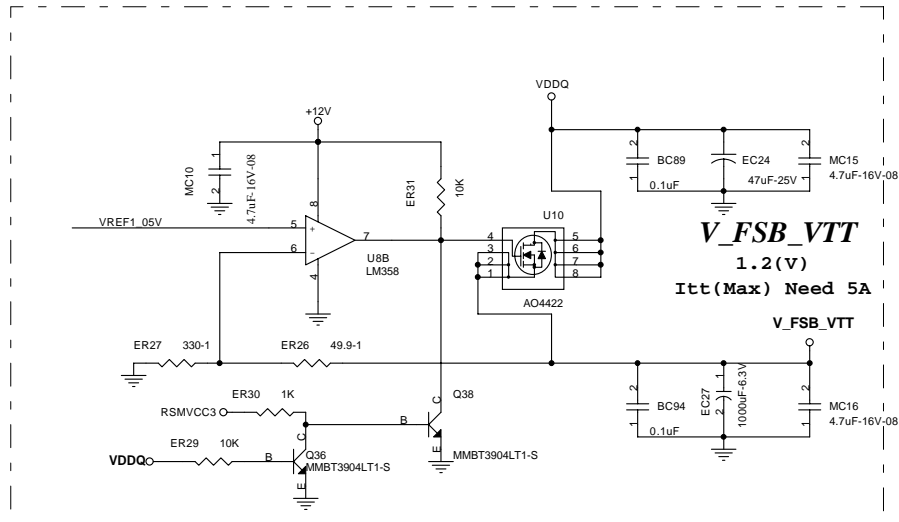
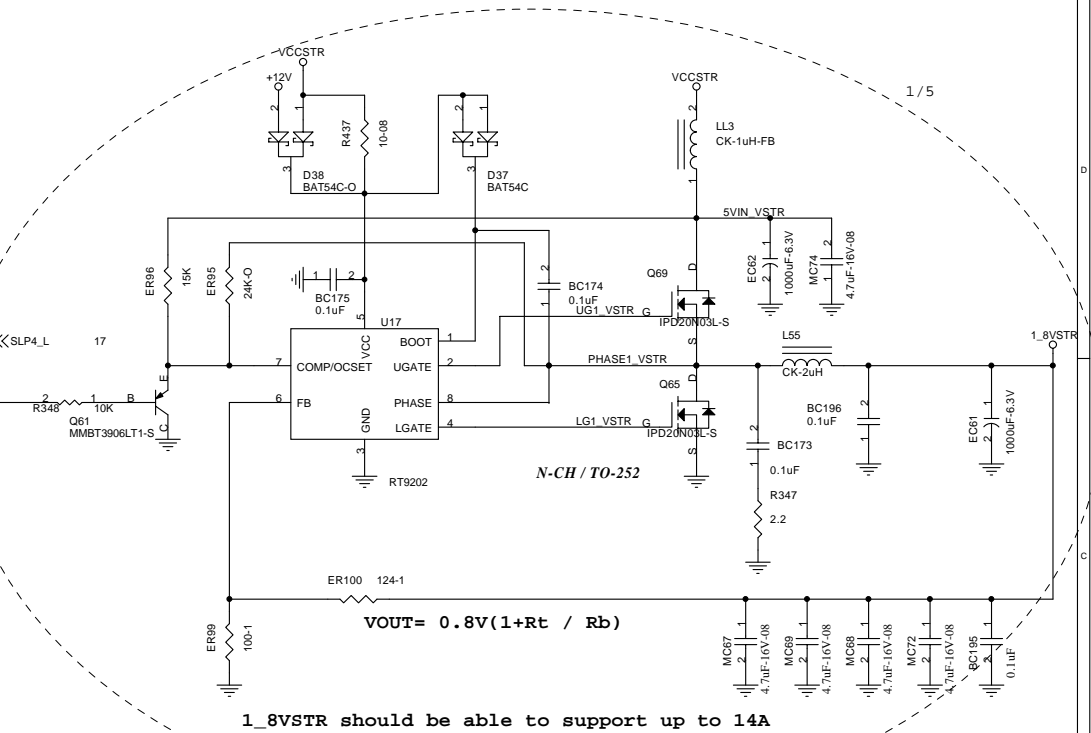
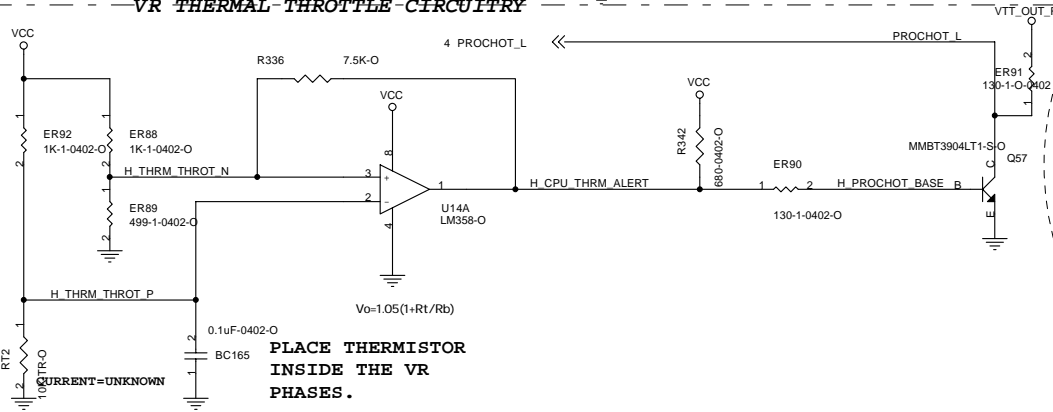
Date:
Monday, July 04, 2005

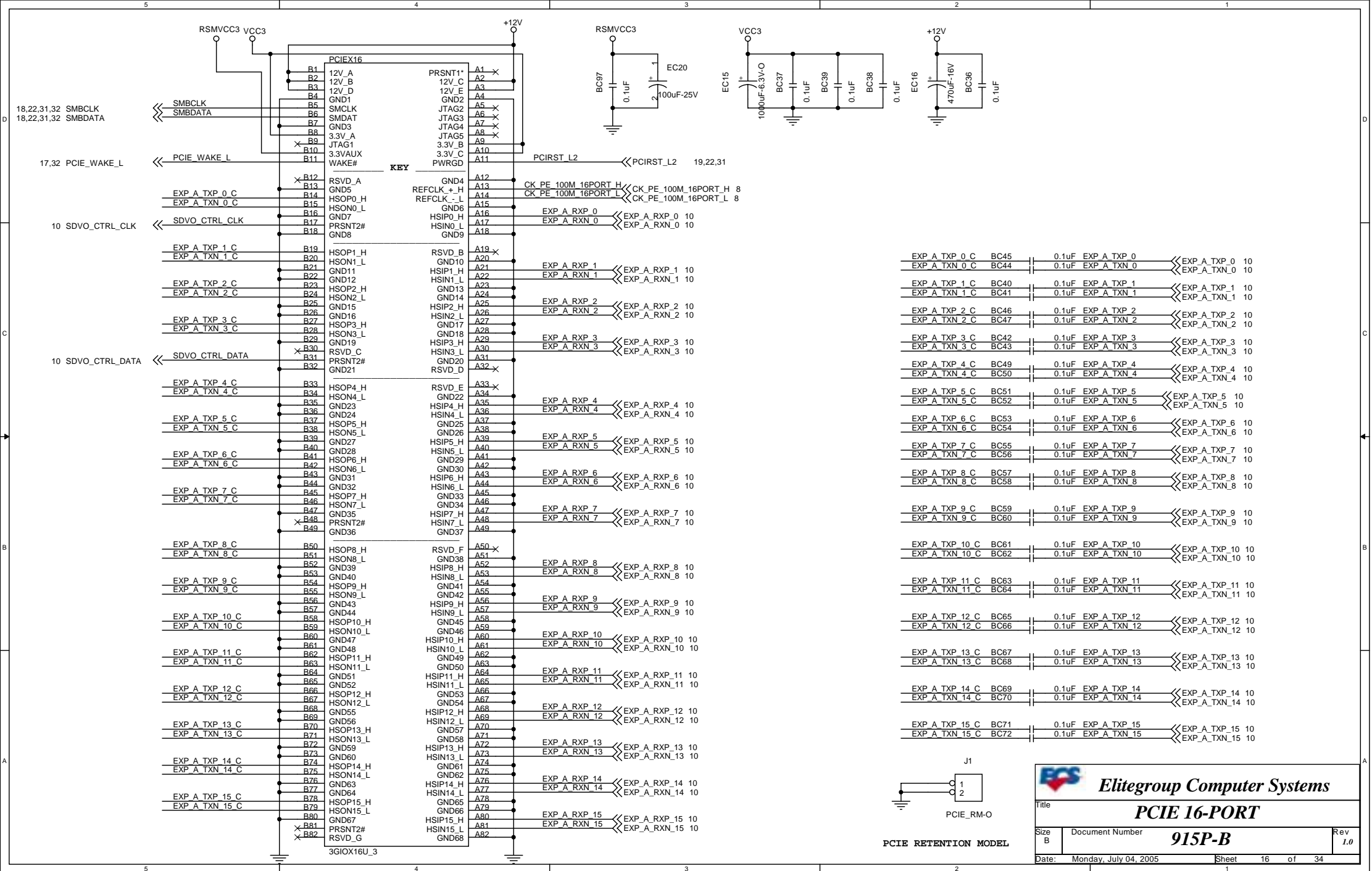
Sheet
12

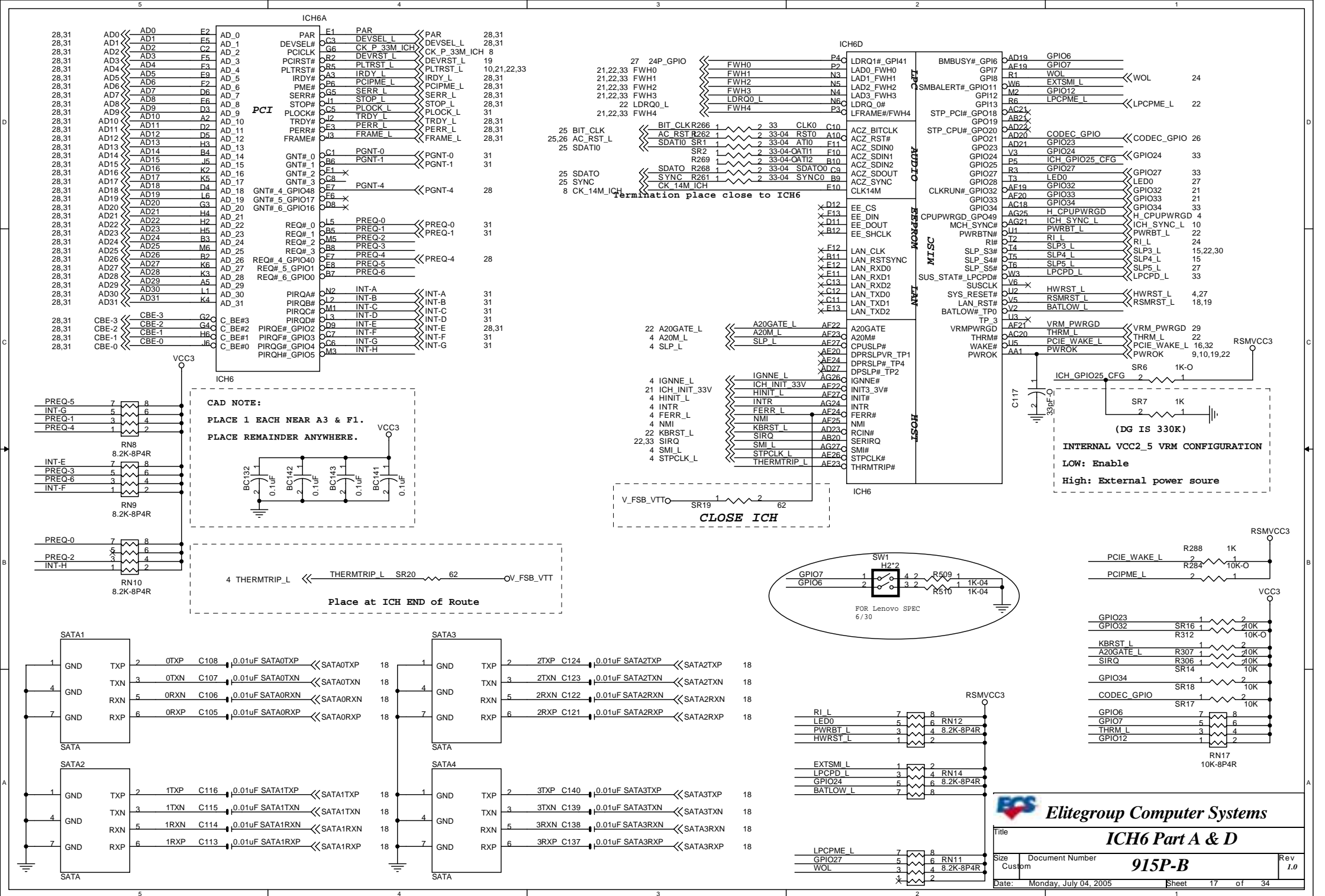
of
34

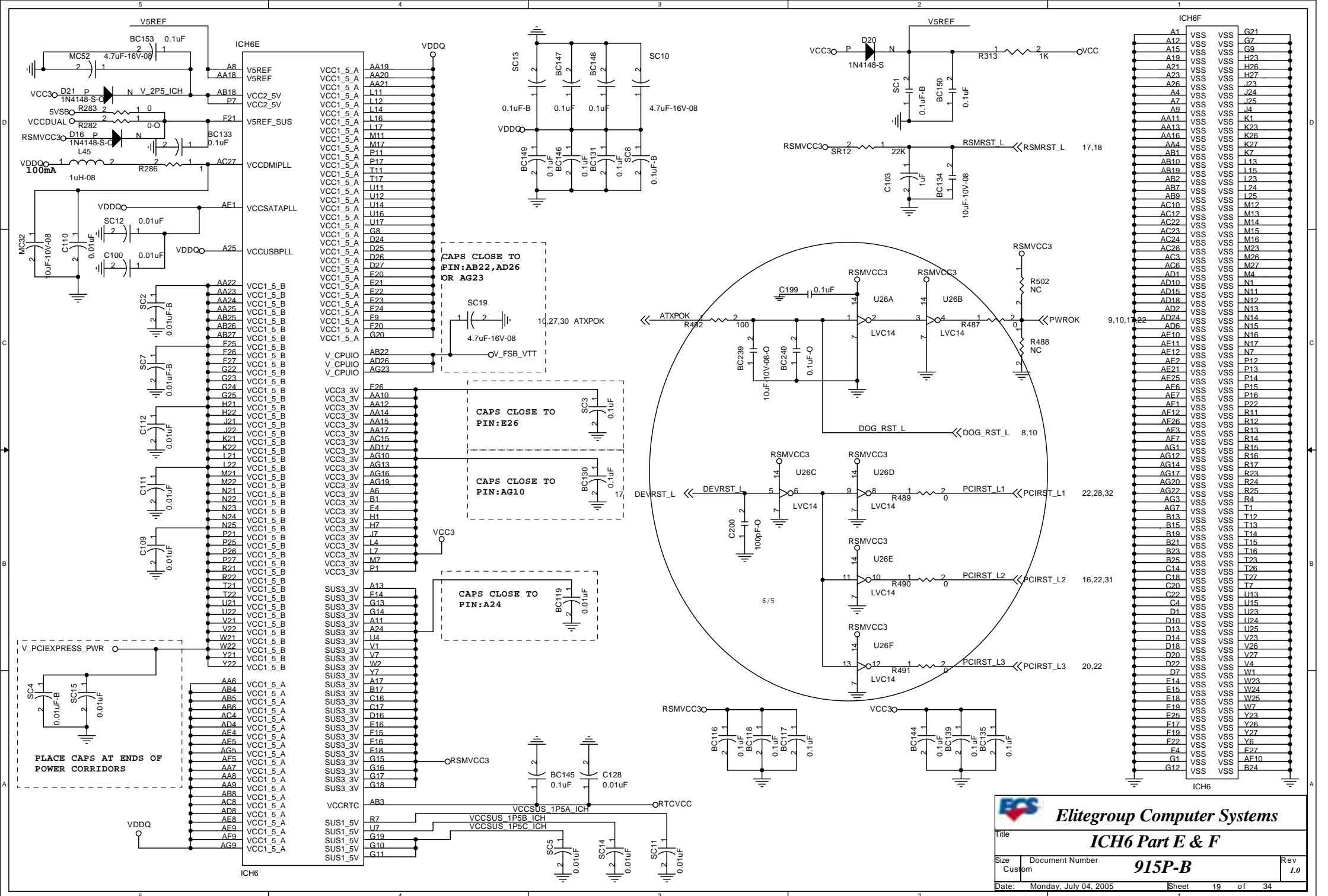


VR THERMAL THROTTLE CIRCUITRY

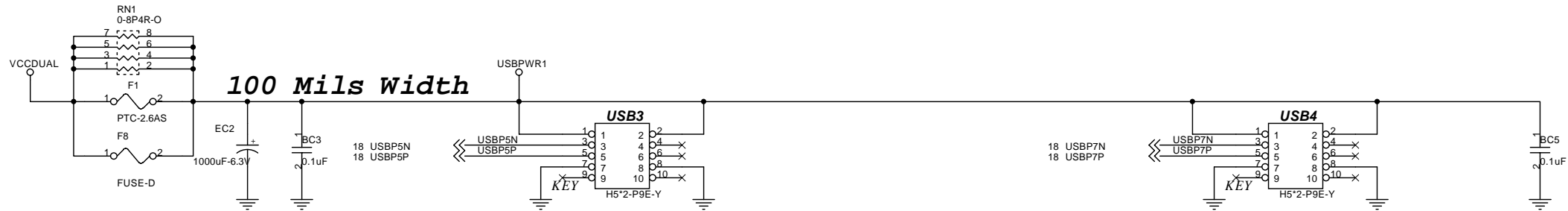








USB PORT INTERFACE



GPI1:

High:XXX Install

Low:XXX

GPI2:

High:1394 Install

Low:1394 xxx

GPI3:

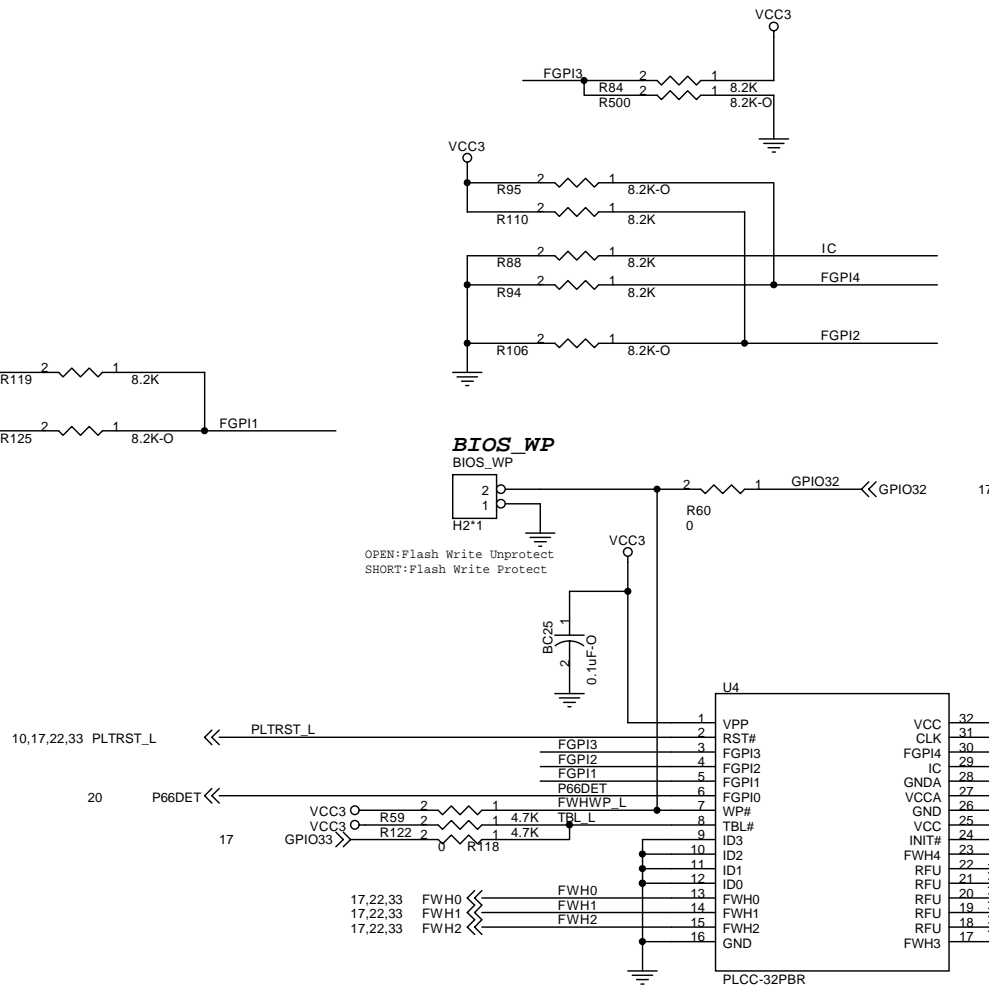
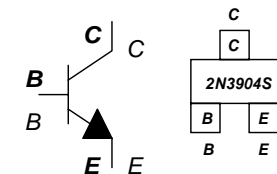
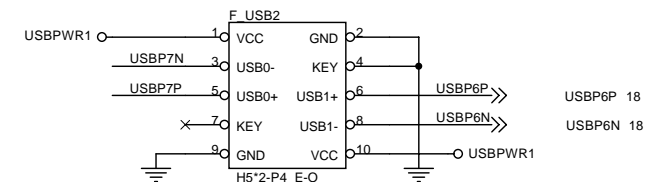
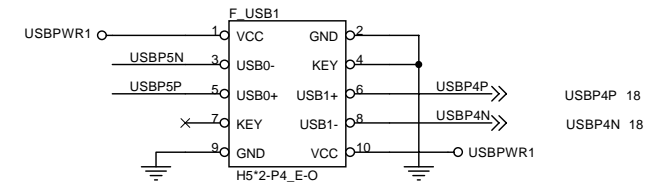
High:Suspend xxx

Low:suspend install

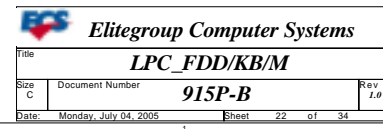
GPI4:

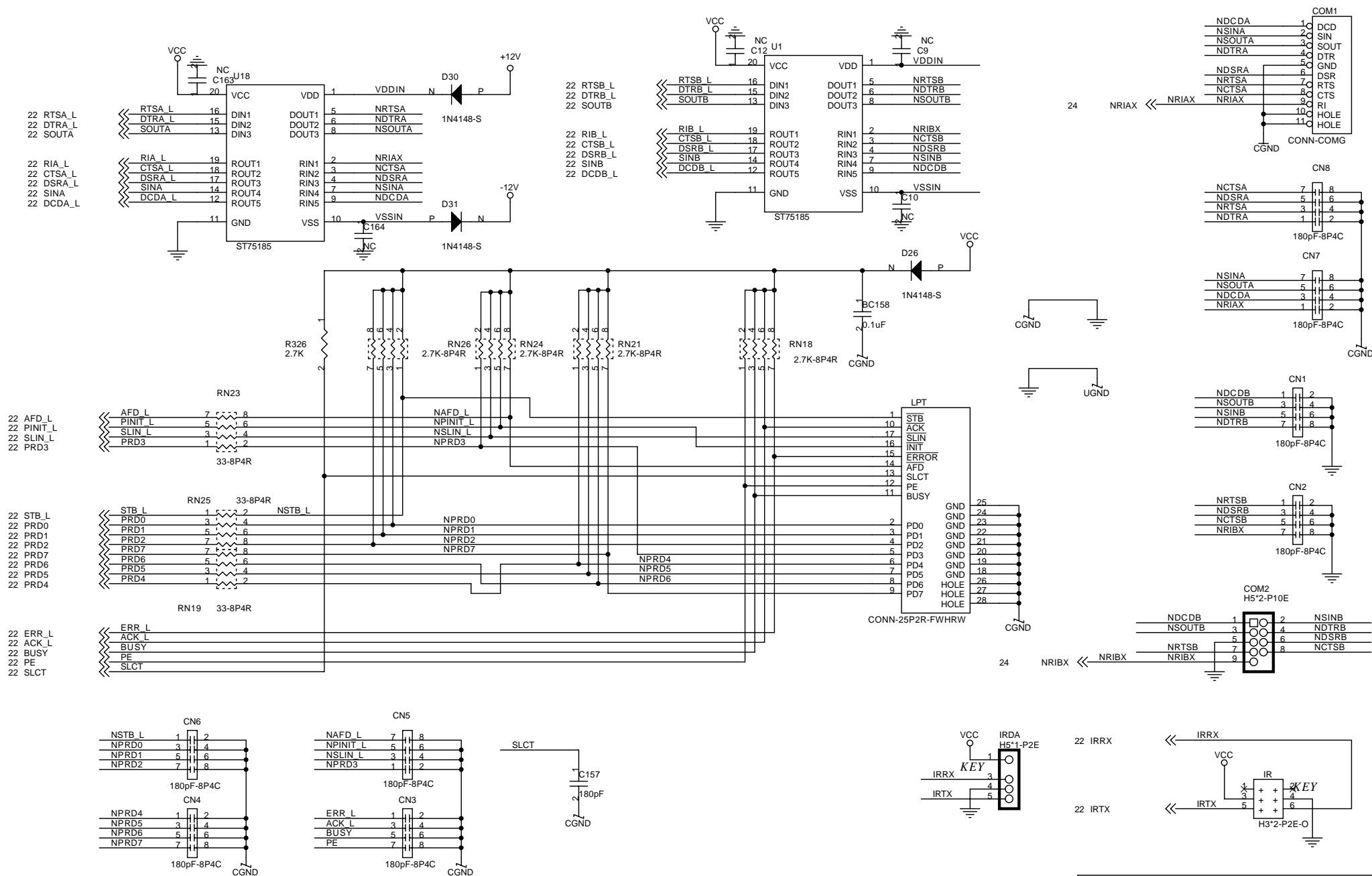
High:3-COM Lan Install

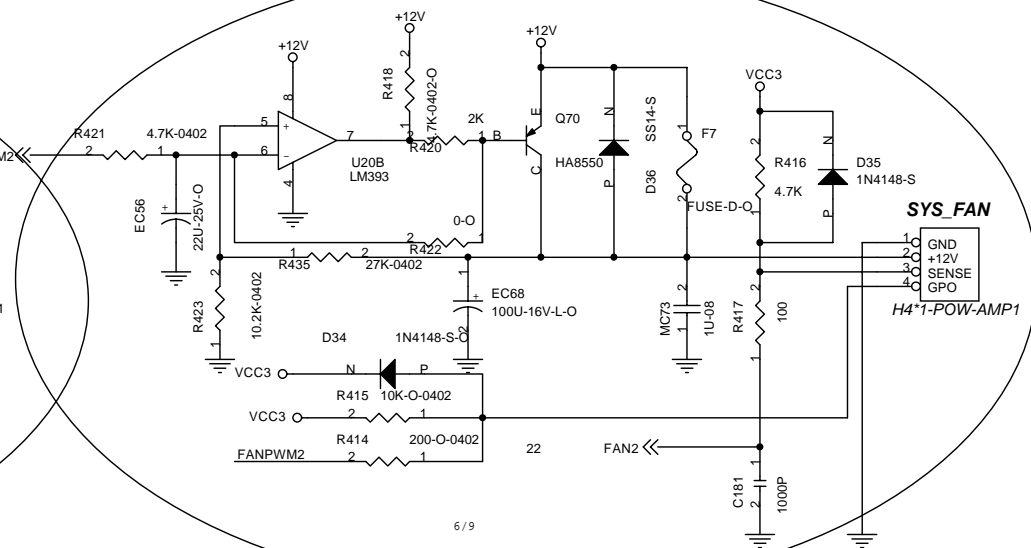
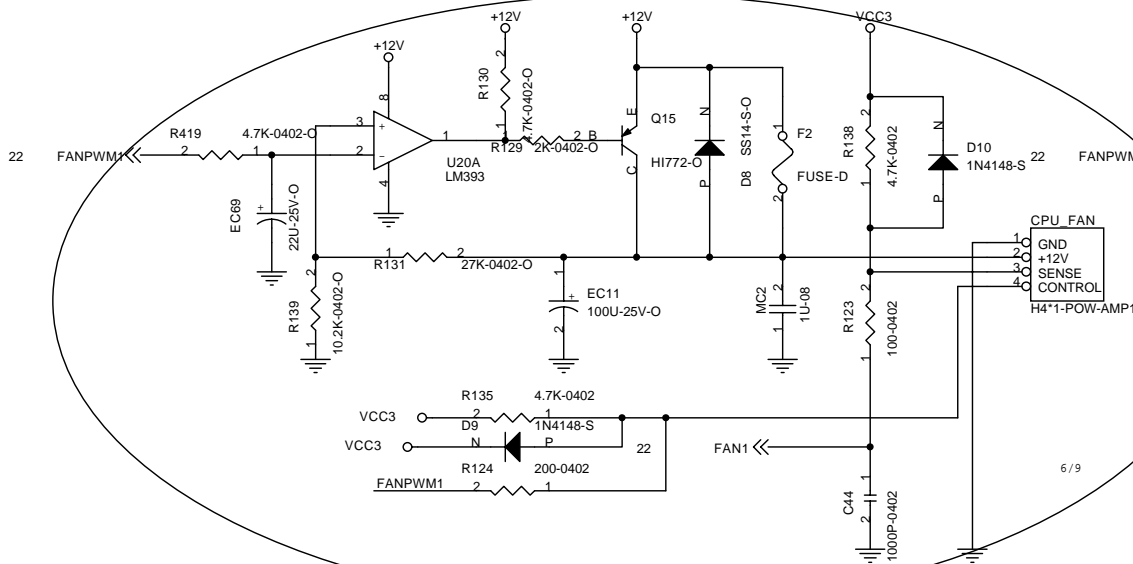
Low:Realtek PCI Lan install



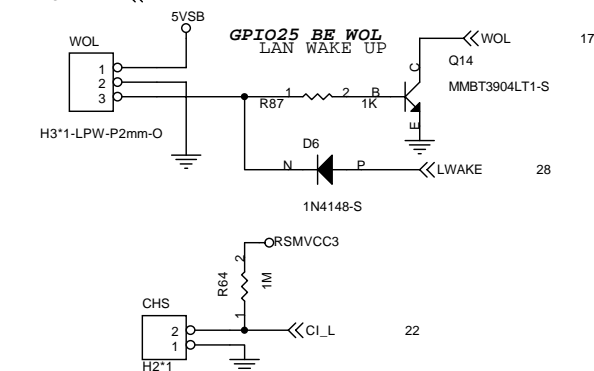
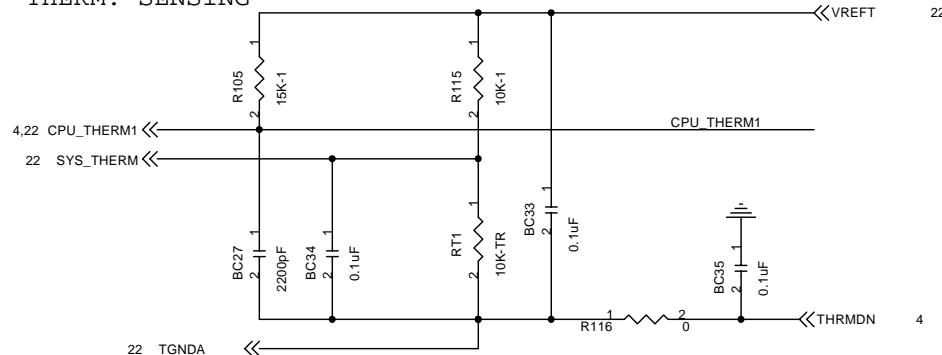
USB/FWH		
Title	915P-B	
Size Custom	Document Number	Rev 1.0
Date: Monday, July 04, 2005	Sheet 21 of 34	



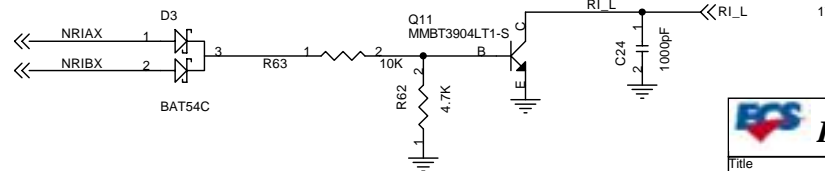




THERM. SENSING



23 NRIAX
23 NRIBX

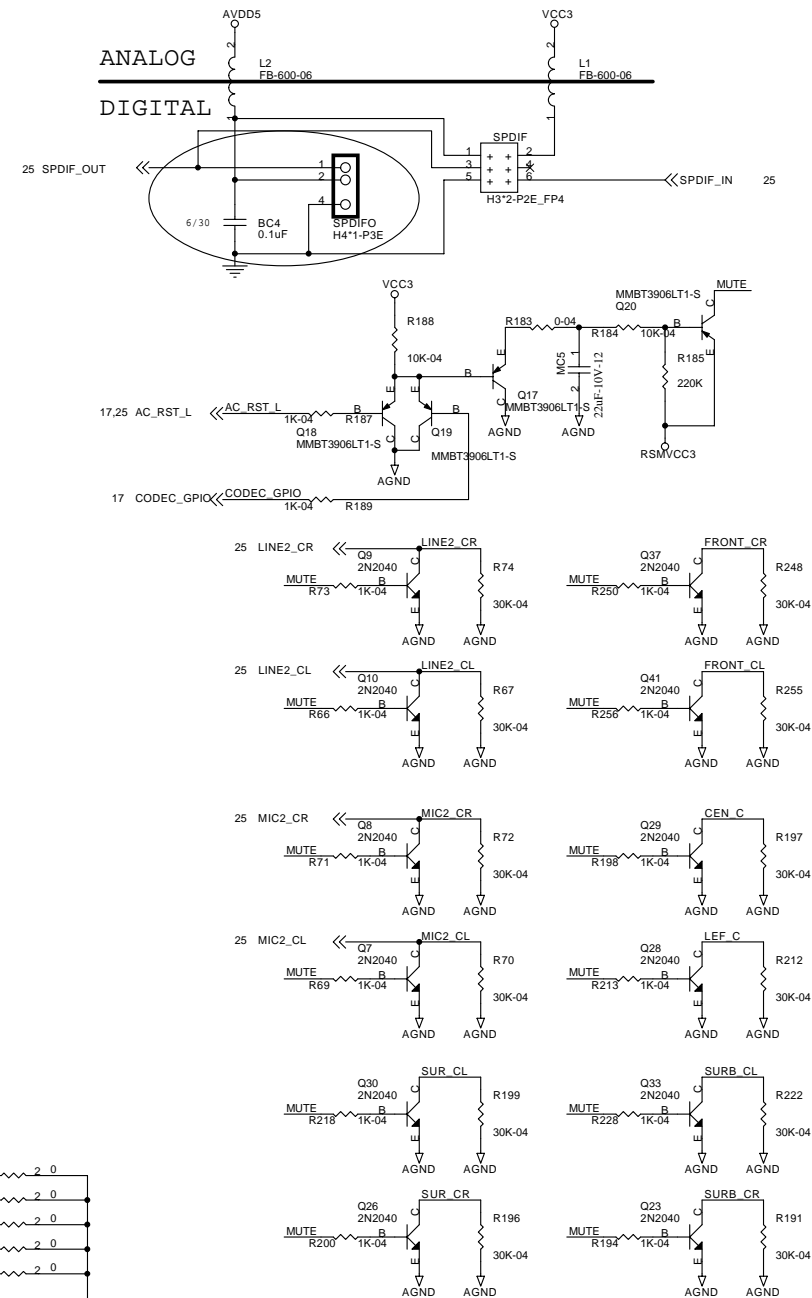
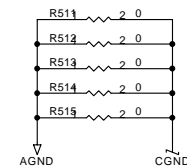
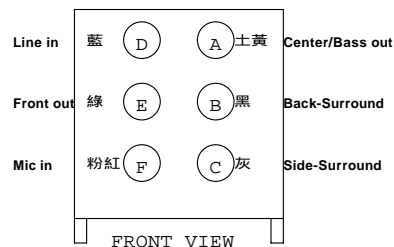
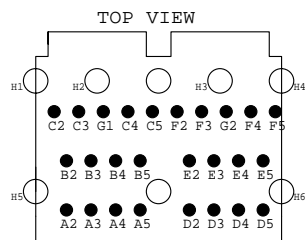
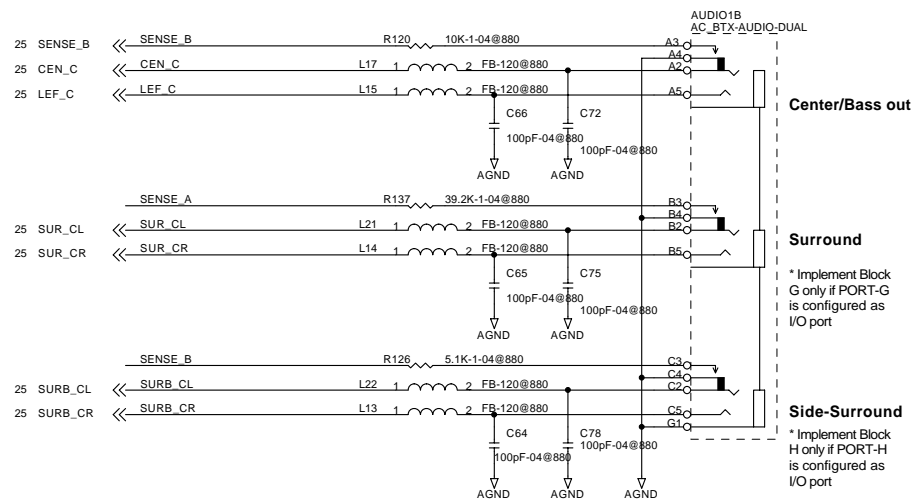
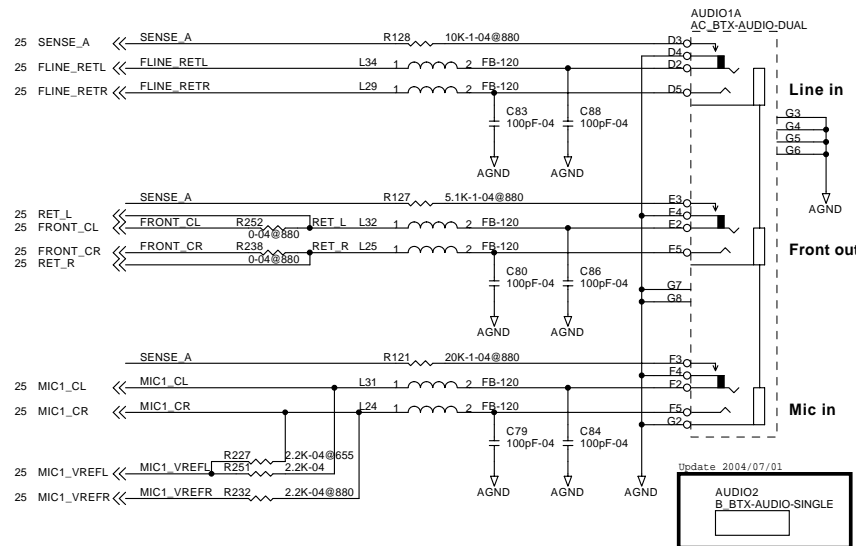


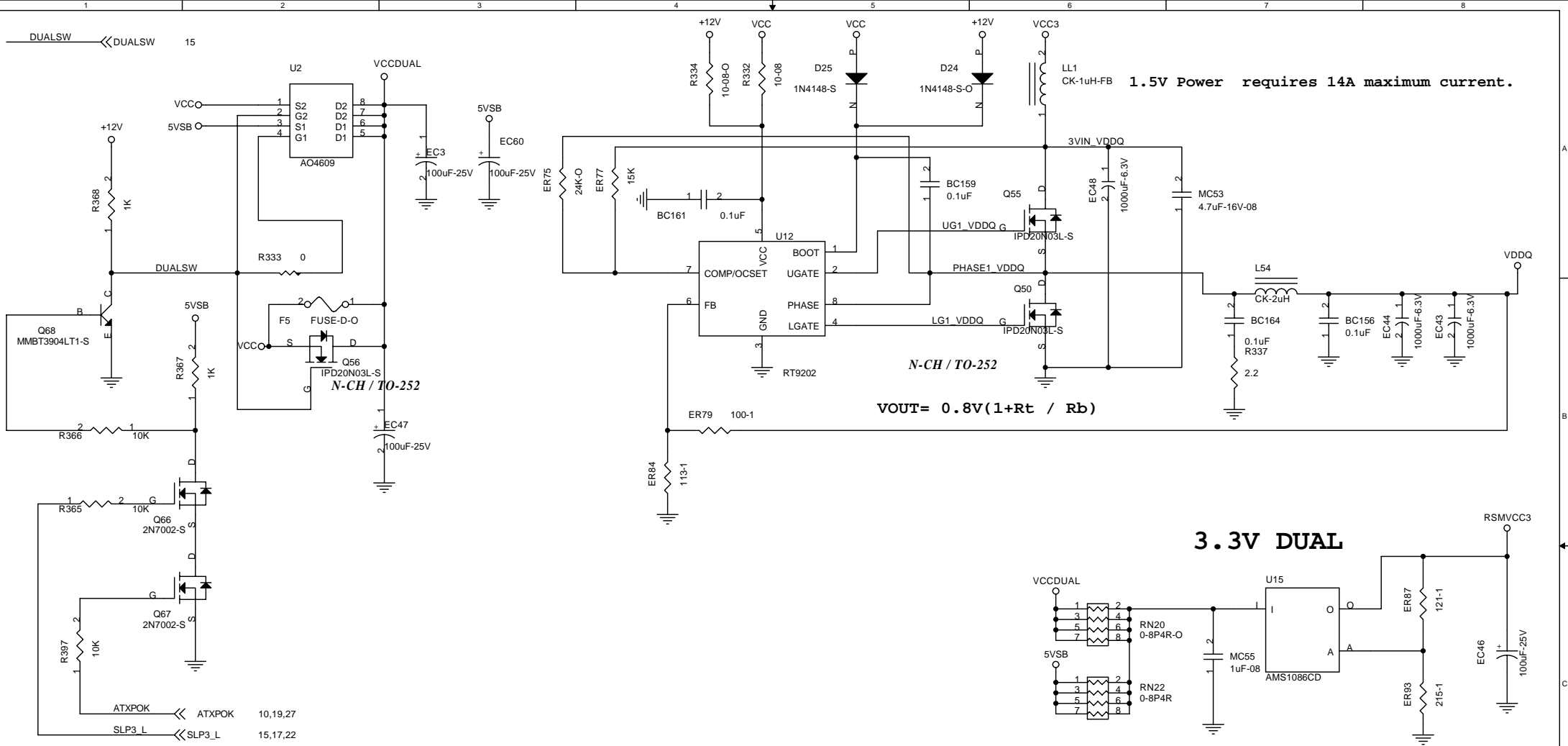
Elitegroup Computer Systems

H/W Monitor

Size Custom Document Number **915P-B** Rev 1.0

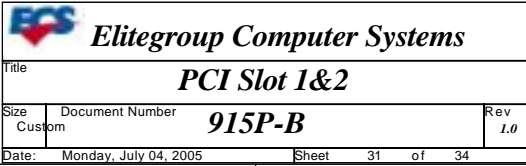
Date: Monday, July 04, 2005 Sheet 24 of 34



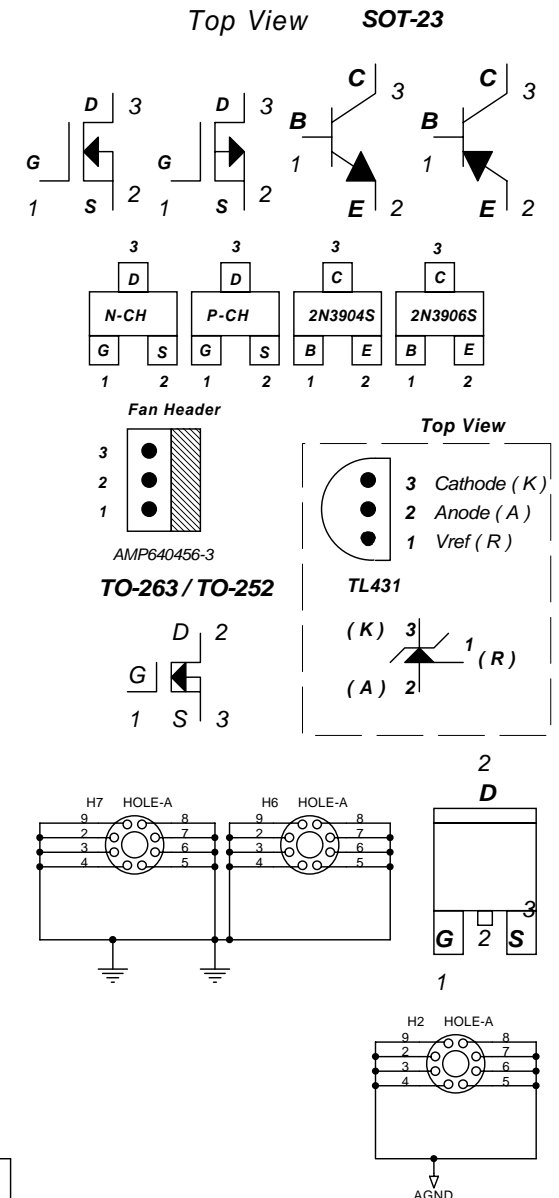
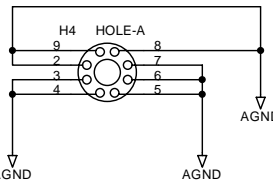
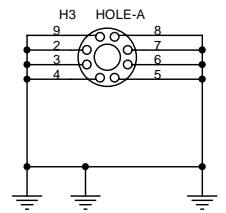
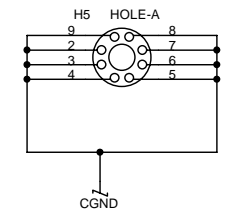
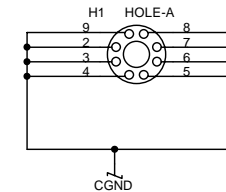
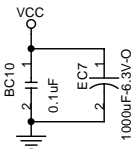
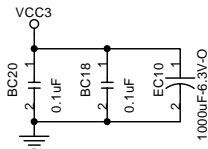
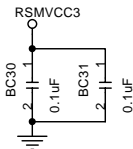
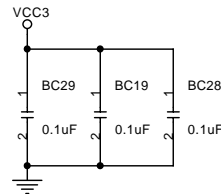
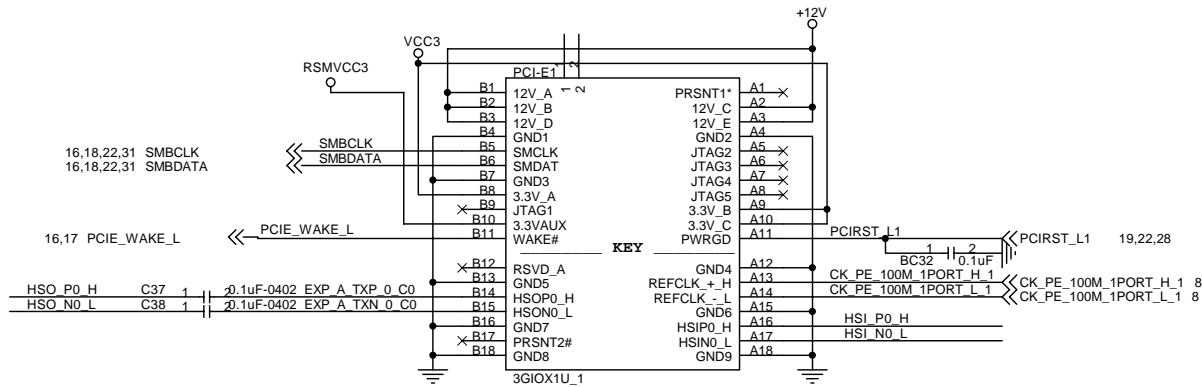


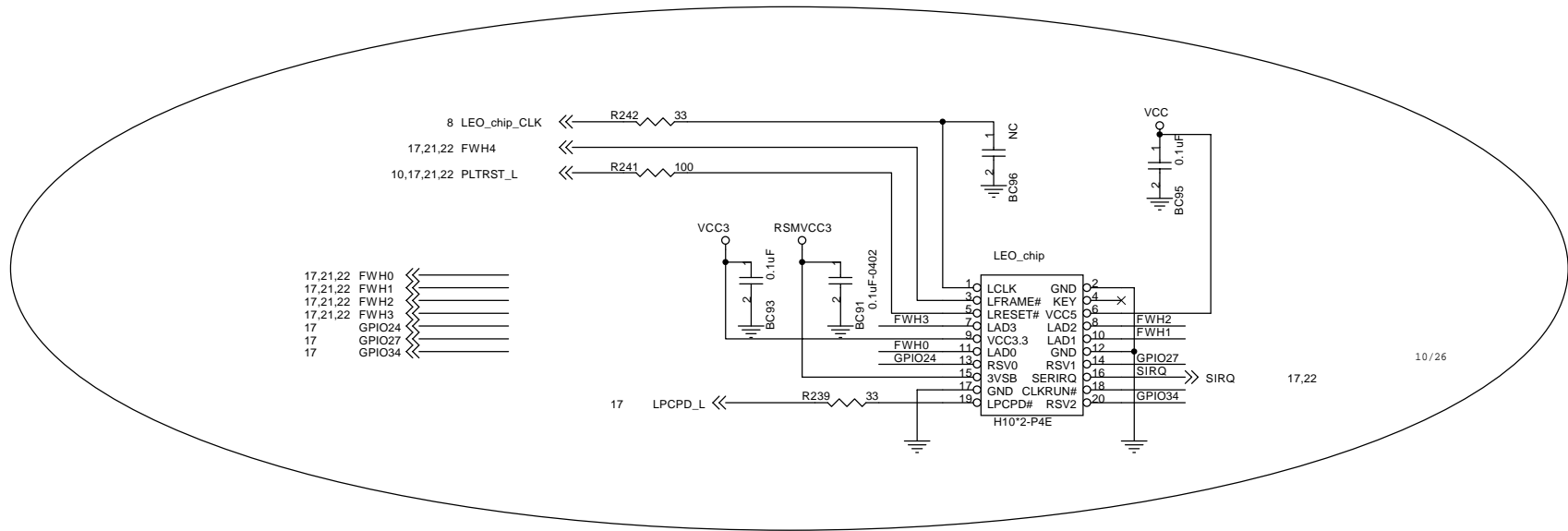
Elitegroup Computer Systems

Title			MIS DC-DC	
Size	Document Number	915P-B		Rev
Custom				1.0
Date:	Monday, July 04, 2005	Sheet	30 of 34	

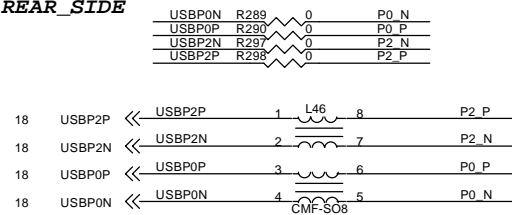


PCI Express SLOT1

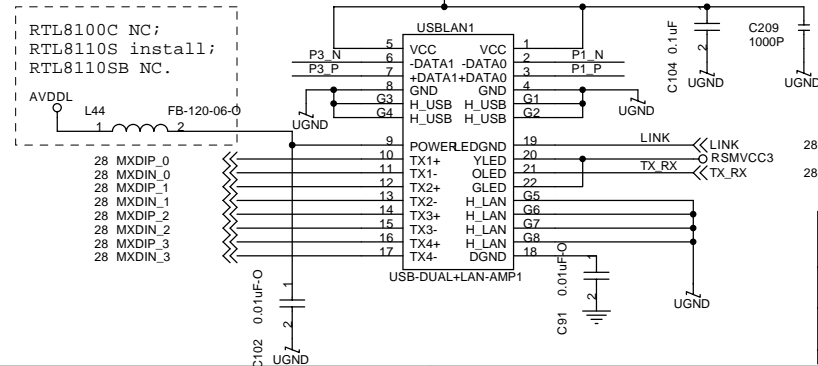
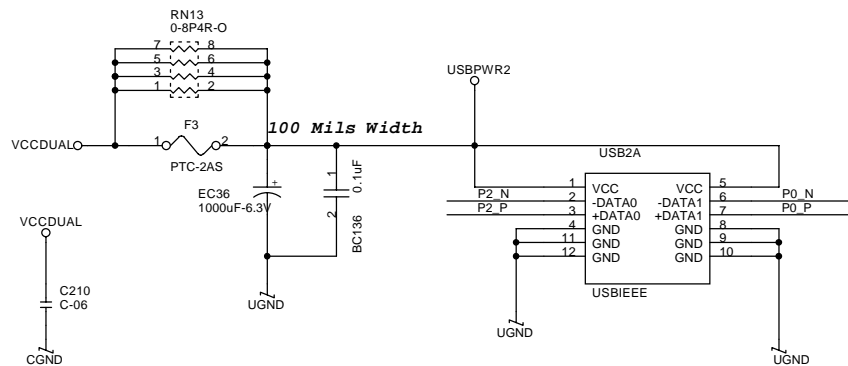
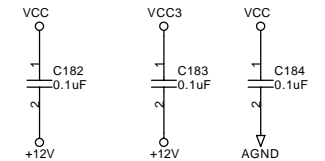
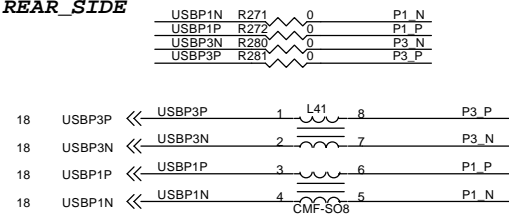





REAR_SIDE



REAR_SIDE



1	2	3	4	5	6	7	8
A							
B							
C							
D							

 Elitegroup Computer Systems		
Title Schematic Change History		
Size Custom	Document Number 915P-B	Rev 1.0
Date: Monday, July 04, 2005	Sheet 34 of 34	